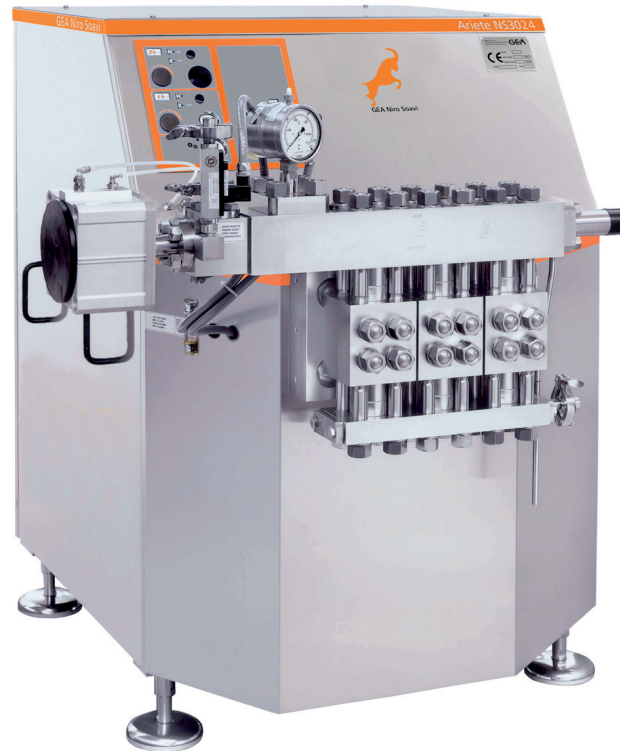


Ariete NS3024



From the world leader in high pressure homogenization: absolute quality and reliability with advanced technical solutions for any process need.

LIQUID END

- High quality stainless steel and special high wear resistance materials for best mechanical and corrosion resistance performances
- 3A and electropolished versions available
- Ball (PVB) and poppet valves (PVP) interchangeable into the same block design for maximum product handling flexibility
- Aseptic version compression block available with sterile condensate packing flushing
- Various materials for pumping plungers

HOMOGENISING VALVE

- One stage (standard on homogenizers) with pneumatic adjustment from the machine's control panel
- High efficiency design valve NanoVALVE™, based on advanced fluid dynamics concepts, available as option
- Engineered for easy maintenance and cleaning
- Second stage option

POWER END

- Heavy duty and reliable power frame
- AC motor drive
- Forced lubrication with gear pump and low oil pressure switch
- "V" belts drive train and gearbox speed reduction unit

CASING

- Made in polished stainless steel with sound proof lining
- Easy access and maintenance with removable panels

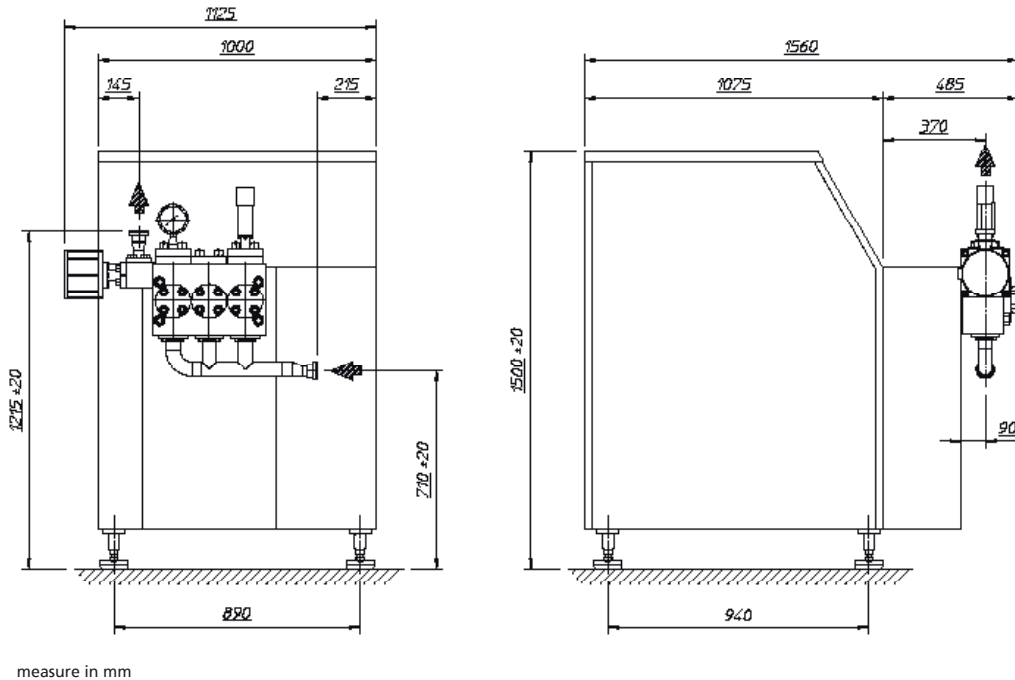
TOOLS AND SPARE PARTS

- Special tools and one set of emergency spare parts supplied with the machine
- O&M manual and spare part list on CD-ROM

GEA Niro Soavi
Leading Pressure

Ariete NS 3024

- Designed according to the EU safety rules (CE standards), engineered, manufactured and tested according to ISO EN 9001 Quality System
- Sanitary and aseptic execution, designed for CIP and SIP
- Suitable for abrasive and viscous products
- Homogenizing pressure up to 1500 bar
- Monoblock compression head design up to 600 bar pressure
- Multiblock VHP compression head design for operation over 600 bar, to avoid stress concentration and block failure
- Easy implementation in remote controlled systems and complete process lines



measure in mm

Technical specifications are not mandatory and subject to change without notice

PERFORMANCES

Pressure (bar)	Max Flow Rate (l/h)
100	7200
150	4800
200	3500
250	2700
400	1500
600	1000
1000	550
1200	310
1500	300

TECHNICAL DATA

Number of plungers	3
Stroke	70 mm
Absorbed motor power up to	24 kW
Weight	1300 kg
Water consumption	90 l/h
Lubricating oil ISO VG 150	20 l
Gearbox oil EP 220	10.5 l

COMPRESSION HEAD

- Special high grade Duplex / super-Duplex SS alloy
- Monoblock or Multiblock VHP construction

PUMP VALVES

- High wear resistant Stellite™ alloy removable seats
- Ball type (PVB) or poppet type (PVP) in solid Stellite™

PISTONS

- Chrome coated stainless steel
- Tungsten carbide coated stainless steel
- Solid ceramic

HOMOGENIZING VALVE

- Pneumatic actuated
- Wear parts made of tungsten carbide, ceramics as option
- High efficiency NanoVALVE™ available as option

PRESSURE GAUGE

- Sanitary design analog high pressure gauge

PRODUCT LINE CONNECTIONS

- DIN 11851, Tri-Clamp™
- Others as option upon request

POWER END

- Rugged cast iron power frame
- Forced lubrication with low oil pressure switch
- Polished SS machine casing on galvanized steel frame

MAIN OPTIONS

- High pressure pump version
- 2nd stage homogenizing valve
- Electric power board for fixed or variable capacity