

# Pony NS2006L



**From the world leader in high pressure homogenization: absolute quality and reliability with advanced technical solutions for any process need.**



#### COMPRESSION BLOCK

- Constructed from Super Duplex SS alloy and fitted with wear resistant components to maximise the service life at high operating pressure
- Solid ceramic pumping pistons equipped with specially designed packing for very high pressure applications
- Suction and delivery ball valves (PVB) in special alloy, highly resistant to abrasion, with replaceable valve seats in Stellite™
- Sanitary design analog pressure gauge, with built-in pulsation damper
- Spring loaded overpressure relief valve

#### HOMOGENIZING VALVE

- Rupture type sharp-edge homogenizing valve in special abrasion and wear resistant material
- Manual pressure adjustment by means of a hand-wheel
- Second homogenizing stage included with flat profile homogenizing valve
- A range of different homogenizing valve types are available for both stages. The selection is dependent on the material that is to be processed

#### FEEDING SYSTEM

- Stainless steel feed funnel (5 l capacity) with connecting pipework to the feeding pump (inclusive of 10 Mesh filter and Tri-clamp fittings)

- Lobe type pump driven by a separate electric motor with built in variable speed drive unit to adjust the feed pressure according to the product viscosity. All product contact parts are in AISI 316
- By-pass valve for re-circulating the product into the funnel and pressure gauge to read the inlet pressure

#### POWER END

- Toothed belt drive
- Three phase motor
- Crank drive with splash lubrication

#### CASING

- Made in polished stainless steel, completely removable for maintenance and cleaning, with galvanized steel base frame
- The machine is mounted on castors for easy handling

#### CONTROL PANEL

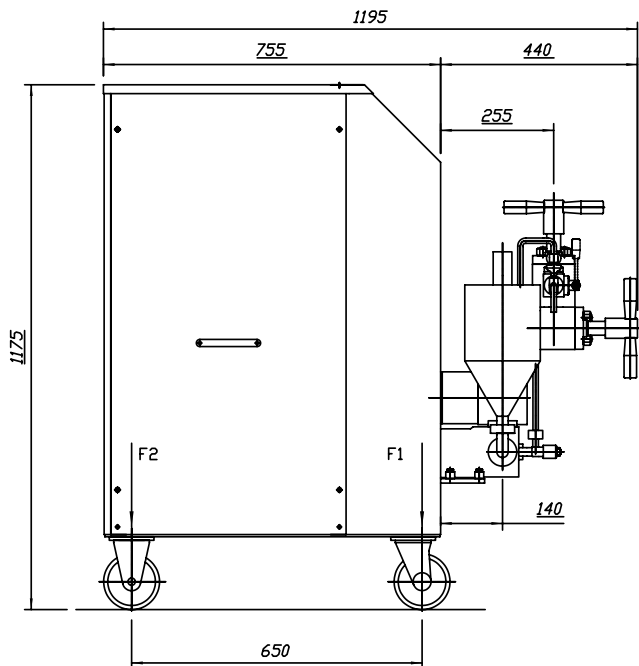
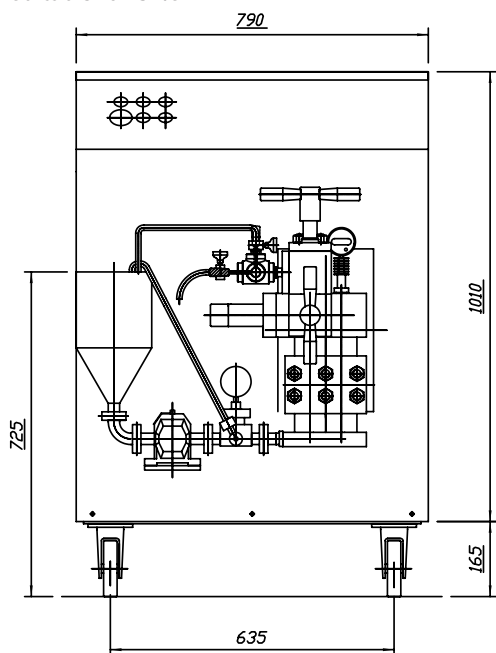
- Electric Power Board in plastic box (IP55 protection) located inside the machine casing. Assembled according to CE standards
- Start/Stop push buttons for homogenizer and feed pump, emergency stop and pump speed adjustment are located on the front panel of the machine

# Pony NS2006L

- The NS2006L Pony is a pilot laboratory unit designed for continuous operation up to 1500 bar, suitable for microsizing tests on many different fluids
- The NS2006L Pony's flexibility makes it a useful tool for many different sectors, such as the food, dairy, chemical, pharmaceutical and cosmetic industries.

## MAIN FEATURES

- Compact design for easy installation, use and maintenance
- Suitable for viscous pumpable products
- Suitable for pharma applications
- Electropolished version (Ra 0,5 µm) available as option
- 3A execution, FDA approved gaskets, cGMP validation documentation available upon request
- Suitable for CIP/SIP



measure in mm

## PERFORMANCES

Pressure (bar)	Max Flow Rate (l/h)
150	-
180	-
200	-
250	-
400	-
600	-
1000	80
1200	80
1500	35

## TECHNICAL DATA

Number of plungers	2
Stroke	40 mm
Motor power	4 kW
Weight	400 kg
Water consumption	40 l/h
Lubricating oil ISO VG 150	1.5 l

## COMPRESSION HEAD

- Special high grade Super Duplex SS alloy
- Multiblock VHP construction

## PUMP VALVES

- High wear resistant Stellite™ alloy removable seats
- Ball type (PVB in Stellite™)

## PISTONS

- Solid ceramic

## HOMOGENIZING VALVE

- Handwheel actuated
- Wear parts made of tungsten carbide or ceramics
- Standard 2 stage homogenizing valve

## PRODUCT LINE CONNECTIONS

- Tri-Clamp™

## POWER END

- Rugged cast iron power frame
- Splash lubrication
- Polished SS machine casing on galvanized steel frame

## FEEDING SYSTEM

- Built in lobe type pump with variable speed drive
- Bypass valve and pipe-work with 5L funnel in stainless steel for re-circulation of the product
- Inlet pressure gauge

## ELECTRIC FEATURES

- Electric Power Board in plastic box (IP55 protection) placed inside the machine casing and control panel on the machine front panel

Technical specifications are not mandatory and subject to change without notice

**COMPANY**  
WITH QUALITY SYSTEM  
CERTIFIED BY DNV  
**= ISO 9001/2000 =**

**edelflex**

Av. Belgrano 2487 - B1611DVD - Bs. As. - Argentina  
Te.: + 54 11 4727 2000 - Fax: + 54 11 4727 2200  
www.edelflex.com - e-mail: info@edelflex.com

GEA Niro Soavi S.p.A.

Via A. M. Da Erba Edoari, 29 - I - 43100 PARMA ITALY  
Tel. +39 0521.965411 - Fax +39 0521.242819  
www.niro-soavi.it