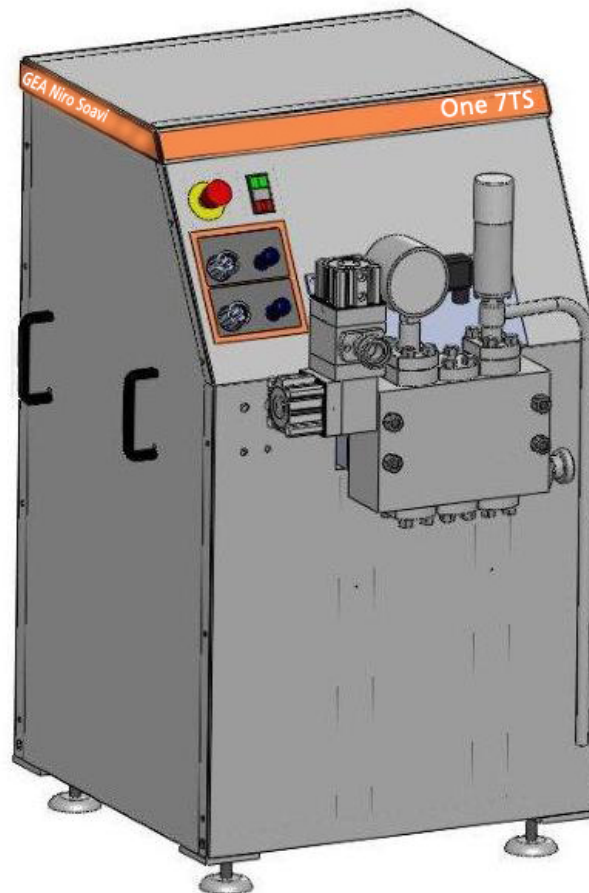




**From the world leader in high pressure homogenization: absolute quality and reliability with advanced technical solutions for any process need.**



#### **LIQUID END**

Engineered with a reduced number of parts for simplified use and maintenance, features a Monoblock construction compression head made of high performance Duplex forged SS alloy, machined with CNC tooling for the highest quality standards. Parts design and surface finish guarantee a safe sanitary execution for optimized cleaning-in-place of wetted parts.

#### **HOMOGENIZING VALVE**

Accurate homogenizing pressure adjustment through pneumatically controlled valve, also available in double stage configuration for process requirements. Easily replaceable wear parts in solid tungsten carbide for extended operation.

#### **POWER END**

Heavy duty construction power drive, with steel alloy crankshaft assembled into a cast iron crankcase housing the power end components, with splash lubrication.

#### **CASING**

Complete stainless steel casing with removable panels, enclosing motor and direct belt drive transmission. The casing includes a stainless steel terminal box/electrical panel directly accessible from the outside.

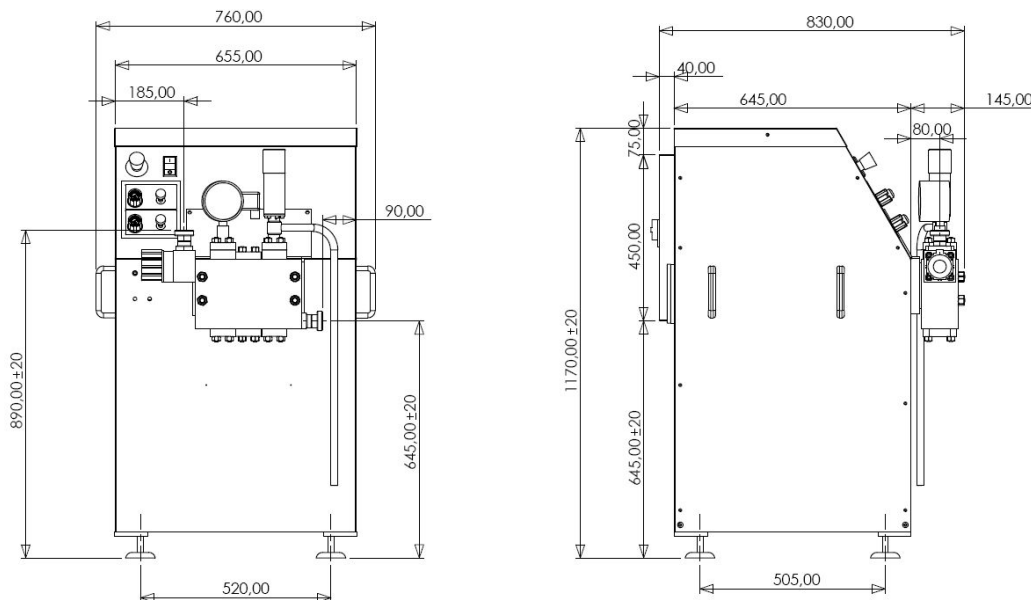
#### **TOOLS AND SPARE PARTS**

O&M manual and spare parts List on CD-ROM. The standard supply includes maintenance tools and a set of emergency spare parts.

**GEA Niro Soavi**  
**Leading Pressure**

# One 7TS

- Designed according to the EU safety rules (CE standards), engineered, manufactured and tested according to EN ISO 9001:2000 Quality Standard
- Available in a range of capacities for operating pressure up to 250 bar
- Simple construction and reduced number of parts, for easy maintenance and cost effective operation
- Energy efficient solutions and reduced consumptions, for optimized running costs
- Easy implementation in complete process lines
- Specific configuration for defined application range in Dairy & Food, including milk and dairy by-products (pasteurized milk, flavoured milk, milk-based drinks, yoghurt drinks, milk for cheese, ice cream mixes), beverages, fruit juices, soy milk



Technical specifications are not mandatory and subject to change without notice

## PERFORMANCE

Pressione (bar)	Portata massima (l/h)
100	1050
130	1050
150	1050
180	1050
200	850
210	850
250	300 - 650

## TECHNICAL DATA

Number of plungers	3
Stroke	40 mm
Absorbed motor power up to	7,5 kW
Weight	350 kg
Water consumption	90 l/h
Lubricating oil ISO VG 150	2,5 l

## COMPRESSION HEAD

- Special forged high grade Duplex SS alloy
- Monoblock construction, rear packing access

## PUMP VALVES

- SS alloy removable and reversible valve seats
- Ball type (PVB) pumping valves in SS alloy

## PLUNGERS

- Chrome coated stainless steel
- Self centering clamped connection

## HOMOGENIZING VALVE

- Pneumatic actuated
- Wear parts made of solid Tungsten Carbide

## PRESSURE GAUGE

- Sanitary design analog high pressure gauge

## PRODUCT LINE CONNECTIONS

- DIN 11851 fittings
- Tri-Clamp™ fittings

## POWER END

- Rugged cast iron power frame
- Special alloy steel crankshaft on roller bearings
- Splash lubrication
- Direct belt drive

## CASING

- Polished SS machine casing on stainless steel frame

## MAIN OPTIONS

- 2nd stage homogenizing valve
- Electric power board for fixed capacity inside the machine casing

**COMPANY**  
**WITH QUALITY SYSTEM**  
**CERTIFIED BY DNV**  
**=ISO 9001/2000=**



**GEA Niro Soavi S.p.A.**  
 Via A. M. Da Erba Edoari, 29 - I - 43100 PARMA ITALY  
 Tel. +39 0521.965411 - Fax +39 0521.242819  
 www.niro-soavi.com